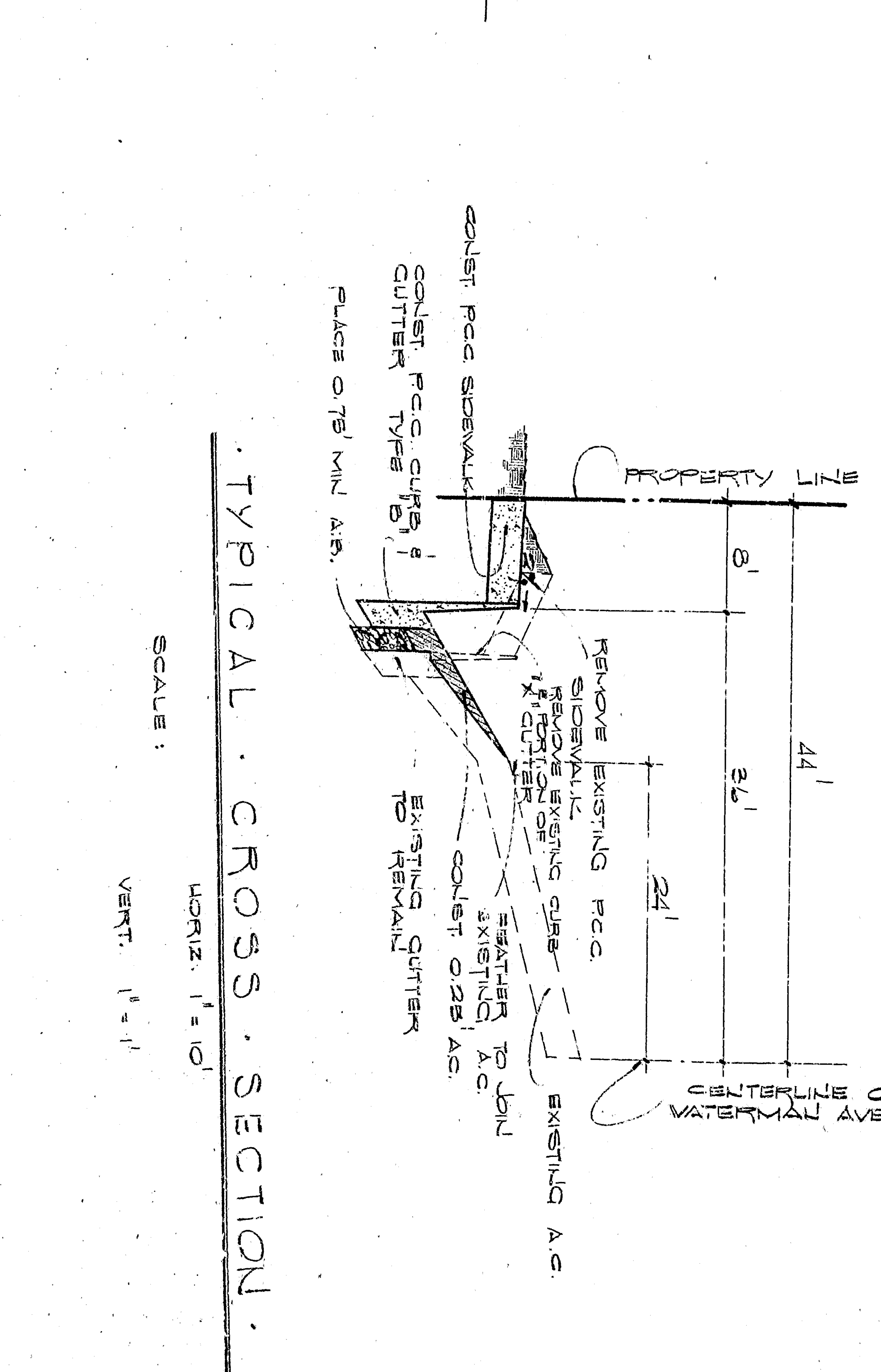
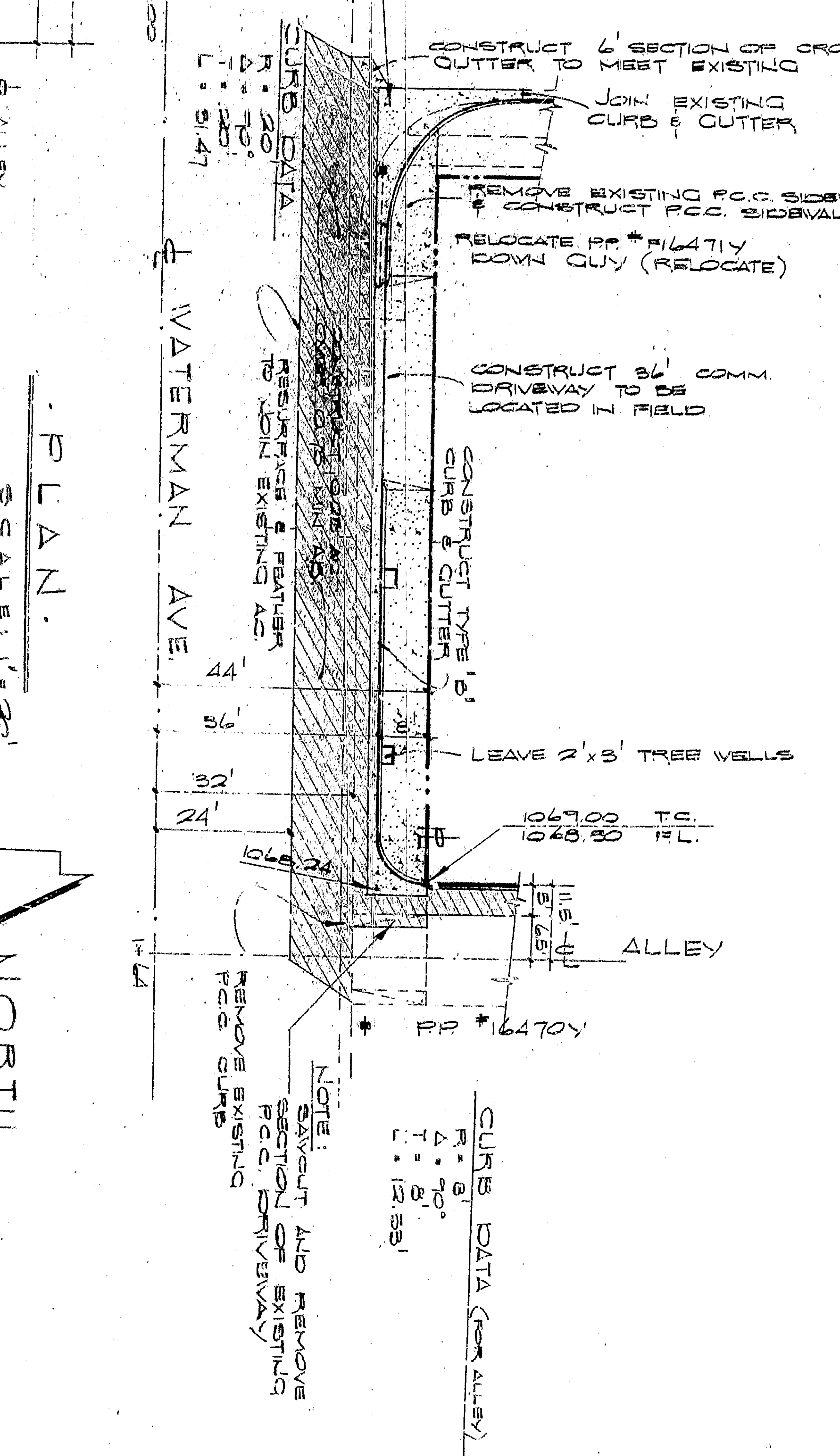
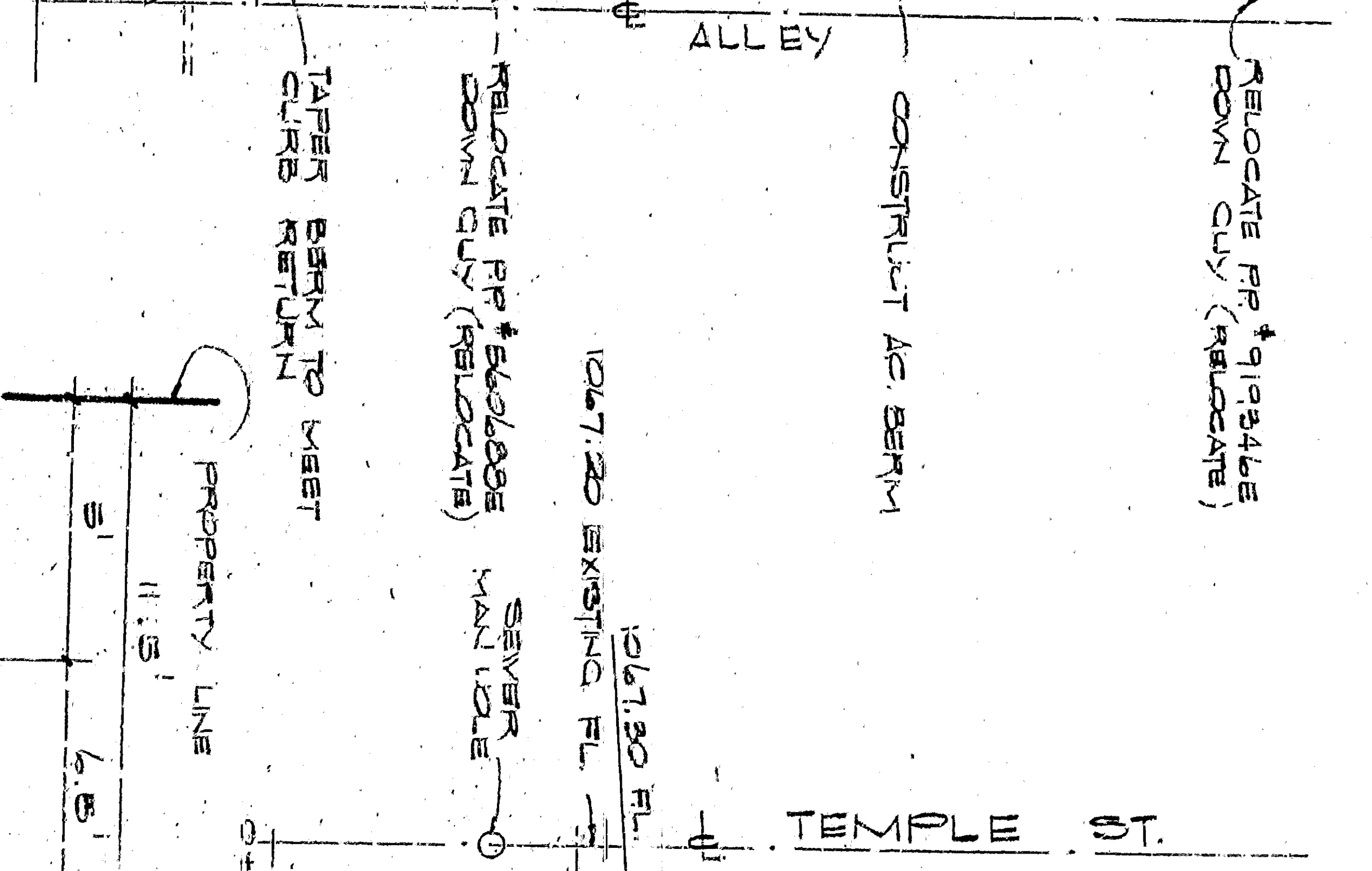
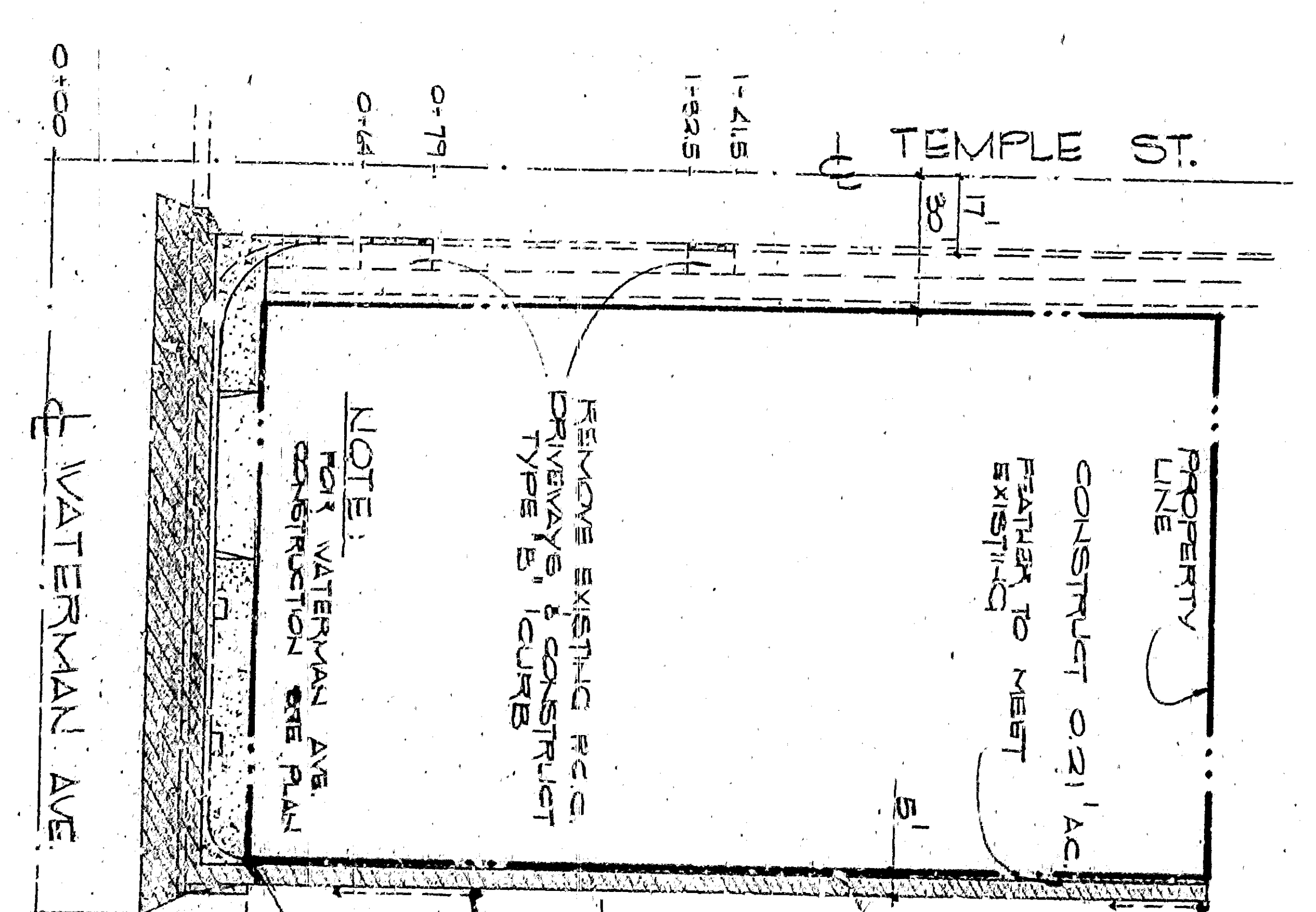


GENERAL NOTES:

1. ALL WORK SHOWN ON THIS PLAN SHALL BE IN ACCORDANCE WITH APPLICABLE PROVISIONS OF STANDARD SPECIFICATIONS FOR ROAD AND HIGHWAY CONSTRUCTION AND STANDARD DRAWING NOTES ON FILE IN THE OFFICE OF THE CITY ENGINEER.
2. BESETT MARK BENCH IN SOUTHWEST CORNER OF TEMPLE & WATERMAN ALLEY 10752 WEST.



APPROVED BY [Signature]	DATE 1/13/85	DEPARTMENT OF ENGINEERING CITY OF SAN BERNARDINO
DESIGNED BY [Signature]	DRAWN BY [Signature]	IMPROVEMENT PLAN NORTHWEST CORNER OF TEMPLE ST. & WATERMAN AVE.
CHECKED BY [Signature]	DATE 1/13/85	
PROJECT NO. [Number]	SHEET NO. [Number]	